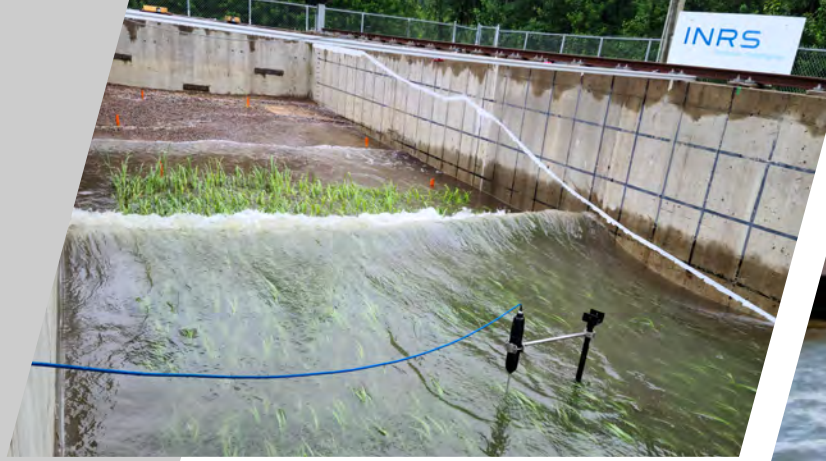




Institut national
de la recherche
scientifique

Eau Terre Environnement
Québec, Québec, Canada

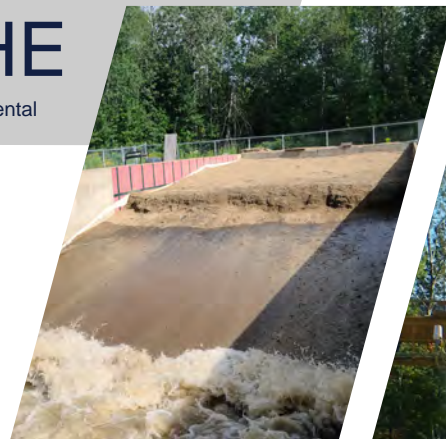


Facilities



Large Wave Flume

Fully-equipped 120 m x 5 m x 5 m flume capable of modelling waves, currents, and sediment transport.



Field Work

Wide range of equipment for hydraulic and coastal field investigations.



CT Scanner

Computed tomography scanning with small flume for modelling waves and currents.



Hybrid Modelling

Small- and large-scale modelling complementing lab and field campaigns with Compute Canada.

Research

Coastal Hazards

- Flooding
- Erosion
- Debris Transport
- Resilient Design

Fluid-Structure Interactions

- Structural Dynamics
- Ice Loading
- Flexible Structures
- Experimental Methods

Nature-based Solutions

- Coastal Vegetation
- Beach Renourishment
- Cold Regions
- Hybrid Structures

Contact Us

Jacob Stolle
Professor
☎ +1 (418) 654-3115
✉ jacob.stolle@inrs.ca

Boutaina El Jai
Partnership and valorisation advisor
☎ +1 (418) 654-2531
✉ boutaina.el_jai@inrs.ca

Find us online at:
🌐 lhe.ete.inrs.ca